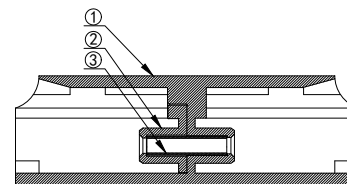
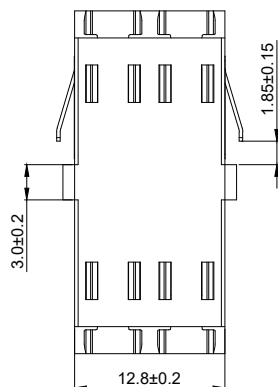
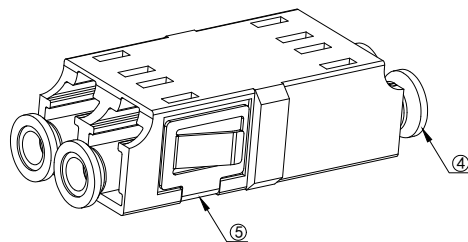
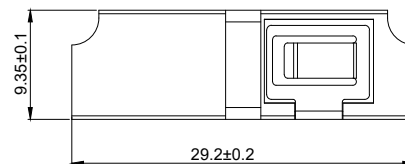
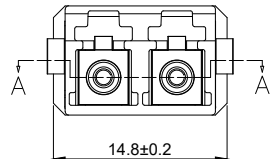


No.	PART NAME	QTY	MATERIAL
1	HOUSING	1	PC/ABS
2	SLEEVE HOLDER	2	PBT
3	SLEEVE	2	ZIRCONIA
4	CAPS	4	PP
5	CLIP	1	SUS304



LC Duplex Fiber Optic Coupler without Flange (SC Footprint)

NOTES
 1. ALL DIMENSIONS WITHOUT TOLERANCE ARE FOR REFERENCE ONLY.
 2. DUST CAPS ARE SHOWN IN ISOMETRIC VIEWS ONLY.



SECTION A-A

	MATERIA: PP K3.FL01.0606
	MATERIA: TPEE K3.FL02.0616
	MATERIA: TPE OR TPV K3.FL03.0607
	MATERIA: TPEE K3.FL05.0608

OPTIONAL ATTACHMENT

TECHNICAL REQUIREMENT :
 1.COMPLIES WITH IEC 61754-20 AND TIA-604-10 STANDARDS
 2.COMPLIES WITH IEC 61753-1 CATEGORY (C)
 3.COMPLIES WITH ROHS , REACH REQUIREMENTS

Parameter	LC-LC			
	SM	MM	APC	OM3/4/5
Insertion Loss (db)	≤0.25	≤0.25	≤0.25	≤0.25
Mechanical Durability	>500			
Sleeve	ZrO2			
Operation wavelength	1310nm~1550nm~850nm			
Operating Temperature(°C)	-40~+75			
Storage Temperature (°C)	-40~+85			

COLOR
 MULTIMODE OM1 - BEIGE
 MULTIMODE OM3/4 - AQUA
 MULTIMODE OM5 - LIME GREEN
 SINGLEMODE UPC - BLUE
 SINGLEMODE APC - GREEN

DIMENSION UNITS	SCALE	CURRENT REV DESC:
MM	1:1	
GENERAL TOLERANCES (UNLESS SPECIFIED)		
ANGULAR TOL ± °		
X	± 0.2	DRWN: JHK 2024/01/12
X.X	± 0.1	CHK'D: CHENEY 2024/01/20
X.XX	± 0.05	APPR: JACK 2024/02/24
X.XXX	± 0.003	INITIAL REVISION:
X°	± 2°	DRWN: CHENEY 2011/01/12
X.X°	± 1°	APPR: JACK 2011/02/24
DRAFT WHERE APPLICABLE MUST REMAIN WITHIN DIMENSIONS		THIRD ANGLE PROJECTION
		DRAWING A-SIZE
		CUSTOMER 00120

Product Title: LC Duplex Fiber Optic Coupler without Flange (SC Footprint)

Product SKU: LC-FODC-XX-02-NF

PRODUCT DRAWING

DOCUMENT NUMBER	DOC TYPE	DOC PART	DREVISION
QT-LC-FODC-NF-DWG	PDF	A001	A/2

MATERIAL NUMBER	CUSTOMER	SHEET NUMBER
SEE TABLE	GENERAL MARKET	1 OF 1